

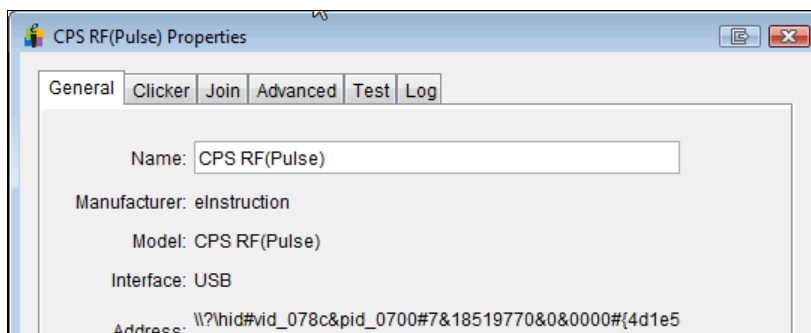


# Updating CPS Pulse™ Hardware

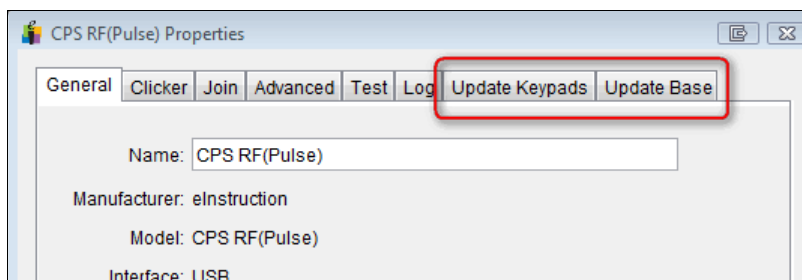
## Spring 2011 Software Release

### Accessing the firmware updaters

Start by opening the device manager and double-clicking on your CPS Pulse™ receiver. This will open the *CPS RF Pulse™ Properties* window.



With the *Properties* window open, hold down the **Ctrl** and **Shift** buttons at the same time, and you will see two new tabs appear: *Update Keypads* and *Update Base*.

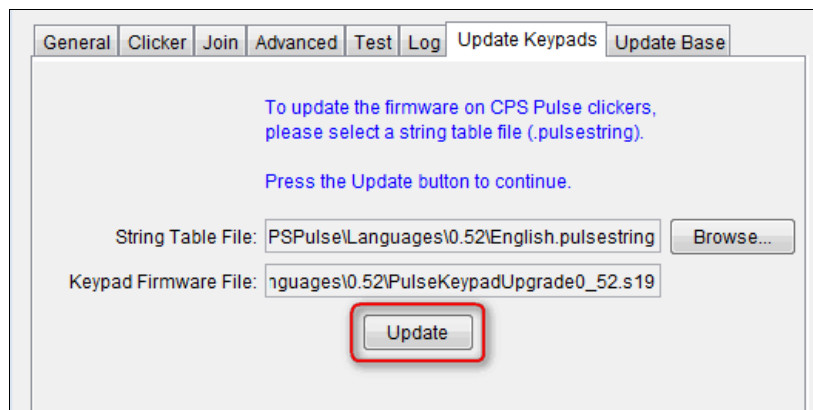


### Updating the CPS Pulse™ SRS devices

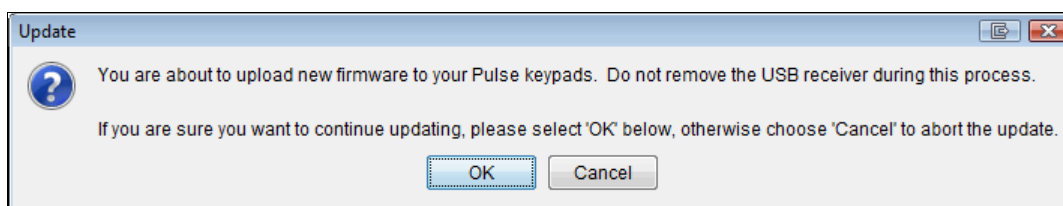
To update your CPS Pulse™ SRS devices, click on the Update Keypads tab. Select the **Browse** button. You should be directed to the appropriate default folder (*Program Files/eInstruction/Device Manager/Firmware Updates/CPSPulse/Languages*).

Next, select the folder for the firmware version to which you want to upgrade (there will normally be only one folder to choose from) and select the appropriate language. This will populate both of the necessary fields in the Device Manager.





Select Update to begin the update process. You will receive a confirmation dialog prompting if you are sure you want to perform the update.

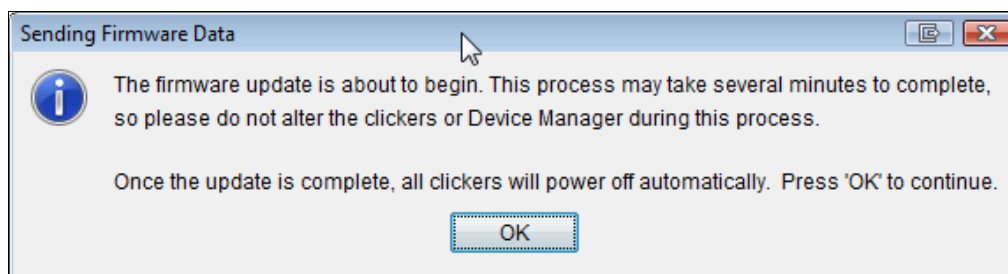


You will then receive a dialog prompting to have your devices join a specific channel. Enter the appropriate channel number on all devices you wish to update. When all devices have joined, select **OK**. *Note: If your devices are already joined to the correct channel number, select OK.*



Next, you will receive a warning dialog stating that you should not do anything with the Device Manager or with the student response devices while the update is taking place. It also informs you that the devices will power down automatically when the update is complete.

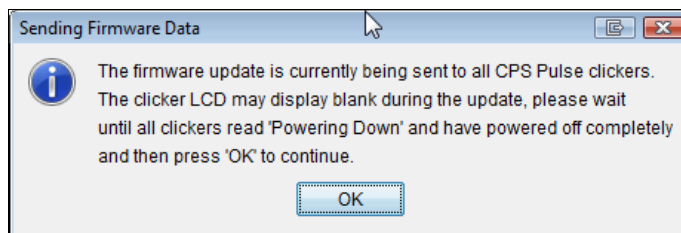
When you are ready to begin the procedure, select **OK**.



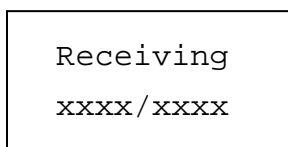
At this point, a window will appear "Sending Firmware Data." This may take a few moments, and appear that nothing is taking place during this time. But on the device, the "down arrow" should be blinking, indicating that data is transferring.

After a few moments, a final warning window appears saying the update is being sent to the devices and to wait until all have completely powered down before proceeding further.

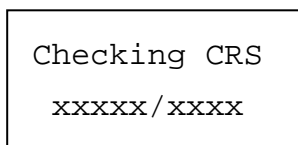




Two messages will appear on the devices. The first indicates the progress of the data transfer:



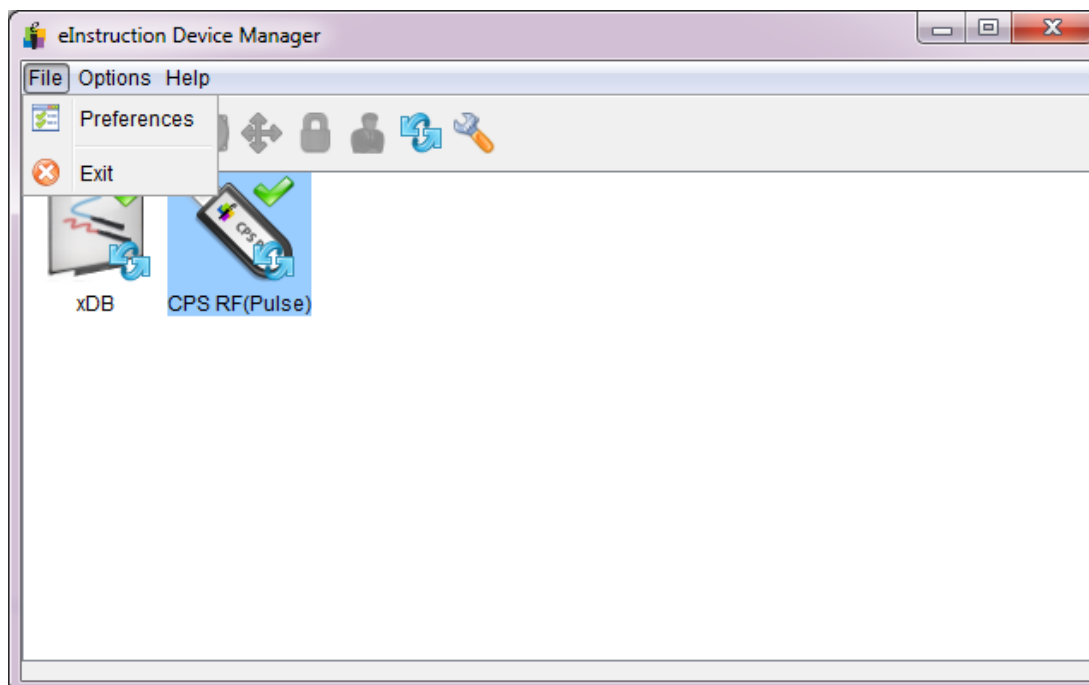
The second indicates the progress of the data verification:



When the verification is complete, the student response device will power off. As all have powered off, select **OK** to complete the update and return to Device Manager.

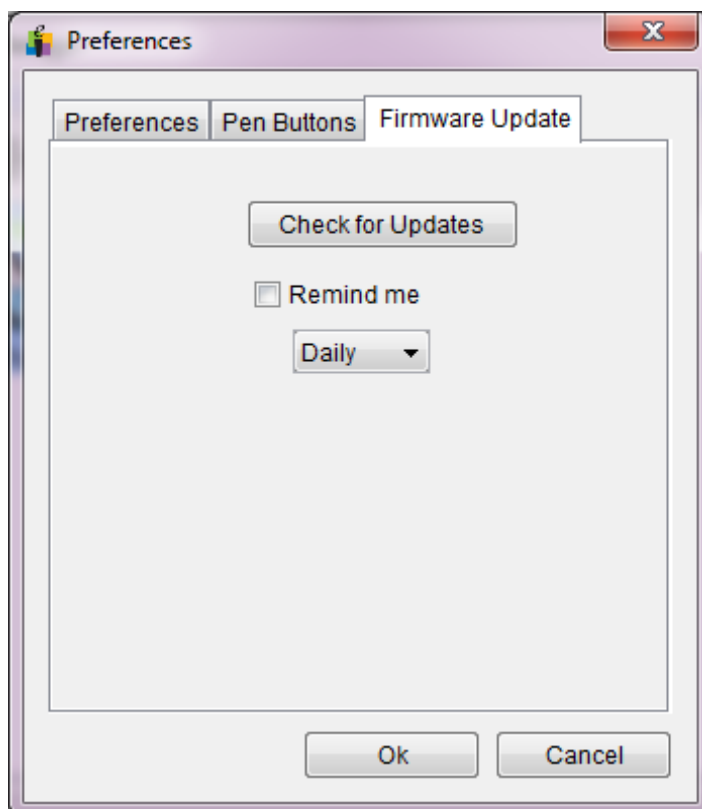
## Updating the CPS Pulse™ receiver

Plug in the CPS Pulse™ RF hub directly into an available USB port on the computer. Open the eInstruction® Device Manager. Select File, then Preferences.

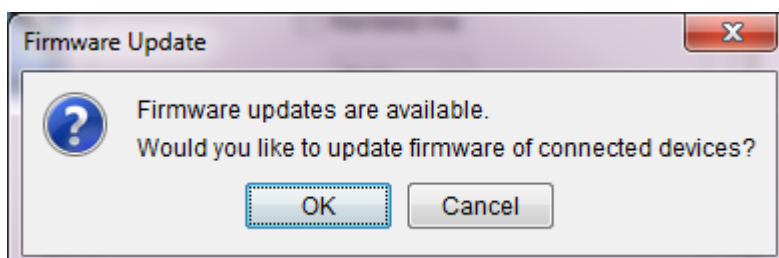


Select the Firmware Update tab.

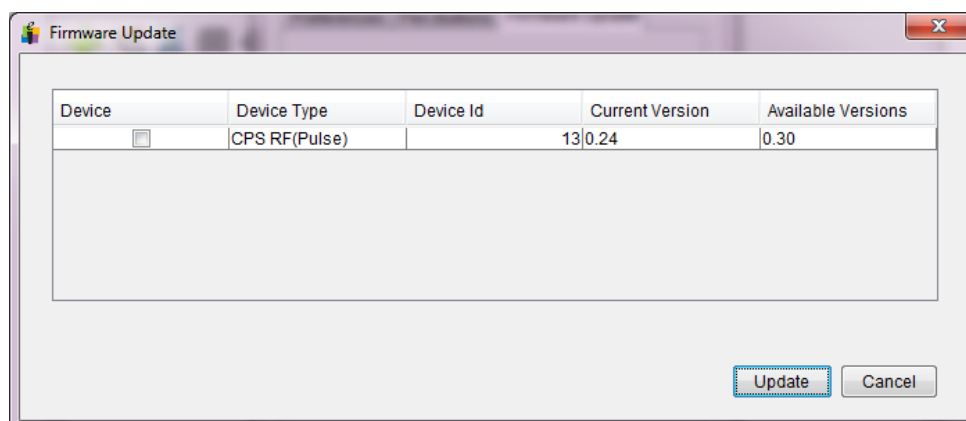




Select Check for Updates button and the following message will appear:

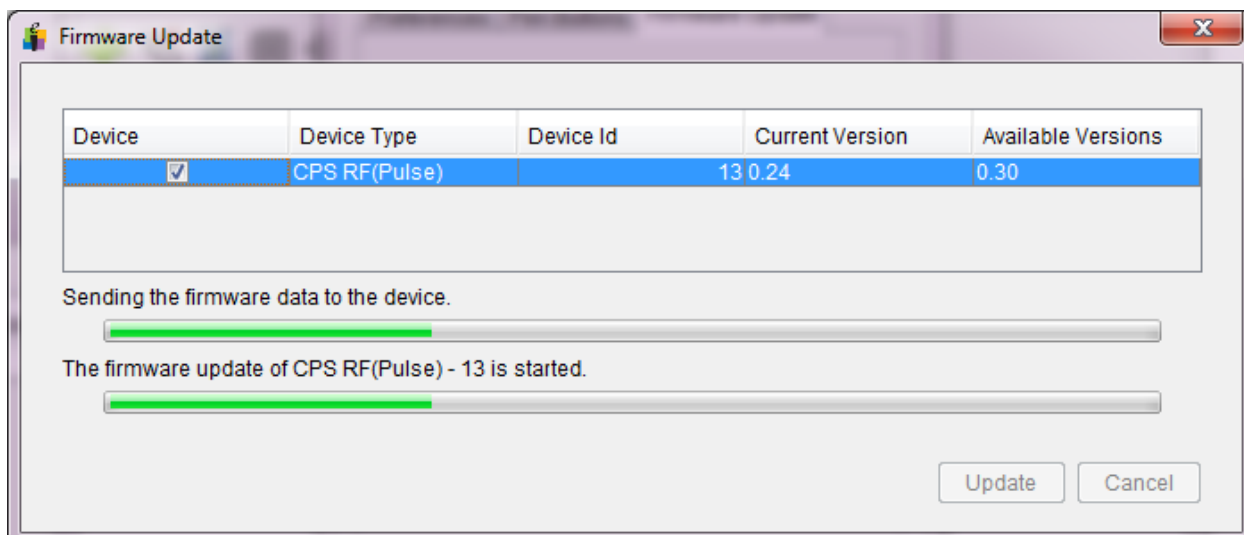


Select OK then select Next on the confirmation screen. The following screen should display the following:

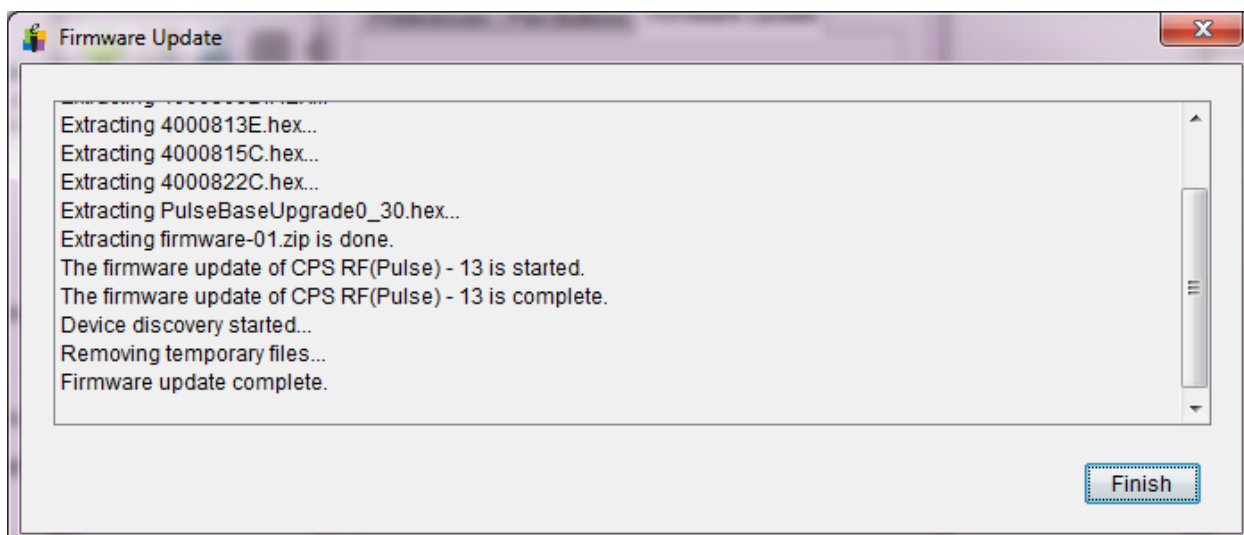




Select the boxes under the Device column you wish to update and select Update. You will be presented with a confirmation box asking if you want to proceed – select OK and the following screen will appear:



Once the devices have completed the update, the following screen will appear:



Select Finish. Your hardware should be updated to the most current firmware.

